

Tyan S2885 Thunder K8W AMD-8000 Series Chipset

2x AMD Opteron 285 2.6GHz FSB333

8x 1 GB PC2700R ECC reg. RAM

ENERMAX Infiniti 650 Watt EPS12V / V2.92

Addtronics W8500 WTX TOWER CASE

It is not just a case. It is a User Friendly case.

Matrox P650 P65-MDDA8X64F AGP 64 MB 400MHZ

4x SATAII 640GB WD Caviar Black WD6401AALS

Adaptec RAID5EE Controller 2420SA

4x SATAII 1TB Western Digital RE2-GP WD

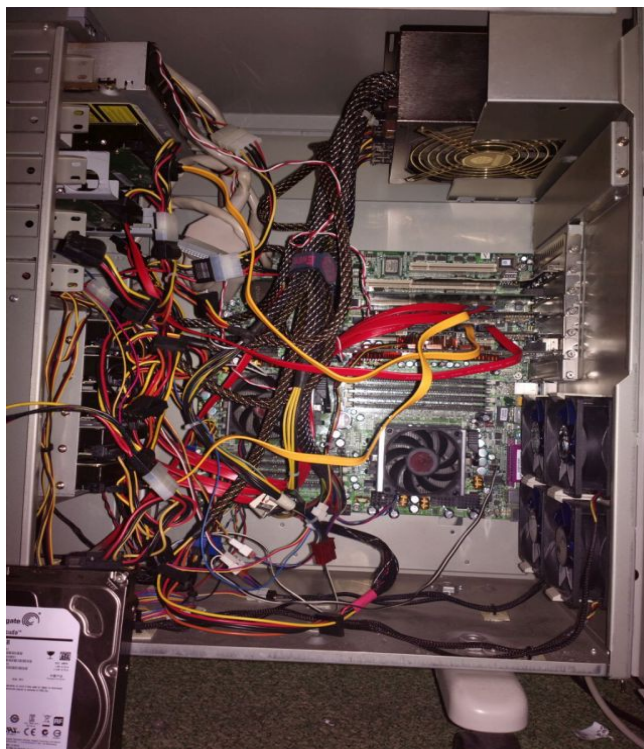
1000FYPS

Adaptec RAID5 Controller 2420SA

NEC MultiSync LCD2070NX 50,8 cm (20") TFT 2 Stück

2x Zalman ZM-MFC1 Plus Lüfter-Controller – silver

Windows XP x64 SP2 Version 2003




CPU-Z

CPU | Cache | Mainboard | Memory | SPD | About

Processor

Name	AMD Opteron 285 (DP)		
Code Name	Italy	Brand ID	57
Package	Socket 940		
Technology	90 nm	Core Voltage	1.392 V



Specification: Dual Core AMD Opteron(tm) Processor 285

Family	F	Model	1	Stepping	2
Ext. Family	F	Ext. Model	21	Revision	JH9-E6

Instructions: MMX (+), 3DNow! (+), SSE, SSE2, SSE3, x86-64

Clocks (Core #0)

Core Speed	2592.9 MHz
Multiplier	x 13.0
Bus Speed	199.5 MHz
HT Link	199.5 MHz


Cache

L1 Data	2 x 64 KBytes
L1 Inst.	2 x 64 KBytes
Level 2	2 x 1024 KBytes
Level 3	

Selection: Processor #2 | Cores: 2 | Threads: 2

Version 1.51

CPU-Z [OK]



American Megatrends
www.ami.com

AMIBIOS (C) 2003 American Megatrends, Inc.
 BIOS Date: 06/14/05 18:03:44 Ver: 08.00.10
 TYAN Thunder KBW U2.05 BIOS
 CPU : Dual Core AMD Opteron(tm) Processor 285
 Speed : 2.6 GHz Count : 4
 DRAM Clocking CPU1 = 166 MHz (333 DDR) , CPU2 = 166 MHz (333 DDR)

Press DEL to run Setup (F4 on Remote Keyboard)
 Press F12 if you want to boot from the network
 Press F11 for BBS POPUP (F3 on Remote Keyboard)
 Checking NVRAM..
 6106MB OK

CPU Configuration

Module Version: 14.04
Physical Count: 2
Logical Count : 4

Dual Core AMD Opteron(tm) Processor 285
Revision: E6
Cache L1: 64KB
Cache L2: 1024KB
Speed : 2600MHz
Current FSB Multiplier: 13x
Maximum FSB Multiplier: 13x
Able to Change Freq. : Yes
uCode Patch Level : 0x4D

GART Error Reporting [Disabled]
MTRR Mapping [Discretel]

This option should remain disabled for the normal operation. The driver developer may enable it for testing purpose.

- ↔ Select Screen
- ↑↓ Select Item
- + - Change Option
- F1 General Help
- F10 Save and Exit
- ESC Exit

NorthBridge Chipset Configuration

- ▶ Memory Configuration
- ▶ ECC Configuration

Power Down Control [Auto]

Memory Timing Parameters [CPU Node 0]

Memory CLK	:166 MHz
CAS Latency(Tc1)	:2.5
RAS/CAS Delay(Trcd)	:3 CLK
Min Active RAS(Tras)	:7 CLK
Row Precharge Time(Trp)	:3 CLK
RAS/RAS Delay(Trrd)	:2 CLK
Row Cycle (Trc)	:10 CLK
Row Refresh Cycle(Trfc)	:12 CLK
Read Write Delay(Trwt)	:3 CLK
Read Preamble	:7.5 ns
Asynchronous Latency	:8 ns

Allow DIMMs to enter power down mode by deasserting the clock enable signal when DIMMs are not in use.

- ↔ Select Screen
- ↑↓ Select Item
- + - Change Option
- F1 General Help
- F10 Save and Exit
- ESC Exit

Advanced

Hardware Health Event Monitoring

CPU0 Temperature	:56°C/132°F
CPU1 Temperature	:49°C/120°F
System Temperature	:50°C/122°F
FAN1 Speed	:3721 RPM
FAN2 Speed	:4147 RPM
FAN3 Speed	:0 RPM
FAN4 Speed	:0 RPM
FAN5 Speed	:0 RPM
FAN6 Speed	:0 RPM
▶ Mainboard Voltages Report	
Auto FAN1,2,3 Power Control	[Disabled]
Chassis Intrusion Detect	[Disabled]

To Monitor Board's Voltages

↔ Select Screen
 ↑↓ Select Item
 Enter Go to Sub Screen
 F1 General Help
 F10 Save and Exit
 ESC Exit

v02.53 (C) Copyright 1985-2002, American Megatrends, Inc.

Advanced

Board Voltages Event Monitoring

CPU0 Vcore	:1.403 V
CPU1 Vcore	:1.403 V
+3.3Vin	:3.403 V
CPU0 DIMM Vref	:1.338 V
CPU0 DIMM Voltage	:2.661 V
CPU1-CPU2 Vhtlink	:1.338 V
CPU1 DIMM Vref	:1.306 V
CPU1 DIMM Voltage	:2.576 V
+5Vin	:5.096 V
+3.3USB	:3.250 V
+12Vin	:12.168 V

↔ Select Screen
 ↑↓ Select Item
 F1 General Help
 F10 Save and Exit
 ESC Exit

v02.53 (C) Copyright 1985-2002, American Megatrends, Inc.